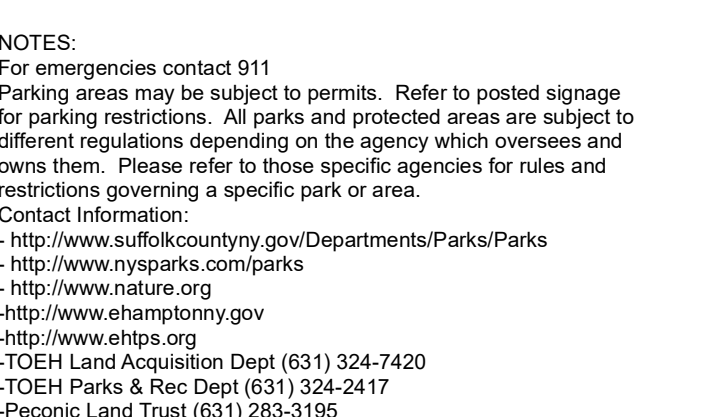


Town of East Hampton
**TRAIL GUIDE
 WEST**

AMAGANSETT
 EAST HAMPTON
 NORTHWEST
 SAG HARBOR
 SPRINGS
 WAINGSCOTT



NOTES:
 For emergencies contact 911
 Parking areas may be subject to permits. Refer to posted signage for parking restrictions. All parks and protected areas are subject to different regulations depending on the agency which oversees and owns them. Please refer to those specific agencies for rules and restrictions governing a specific park or area.
 Contact Information:
 - Suffolk County: <http://www.suffolkcounty.gov/Departments/Parks/Parks>
 - Nassau County: <http://www.nassaucounty.com/parks>
 - Nature: <http://www.nature.org>
 - East Hampton: <http://www.easthampton.org>
 - East Hampton Beach: <http://www.easthamptonbeach.com>
 - TOEH Land Acquisition Dept (631) 324-7420
 - TOEH Parks & Rec Dept (631) 324-2417
 - Peoples Land Trust (631) 293-3190

Special Thanks To:
 The East Hampton Trails Preservation Society
 TOEH Dept. of Land Acquisitions
 Data Collection Using GNSS Done By:
 Bob Masin, Andy Gaites & Andy Drake
 Prepared By:
THE TOWN OF EAST HAMPTON
 Dept. of Information Technology
 B. Masin, 2020
 Print Date: October, 2020

Legend

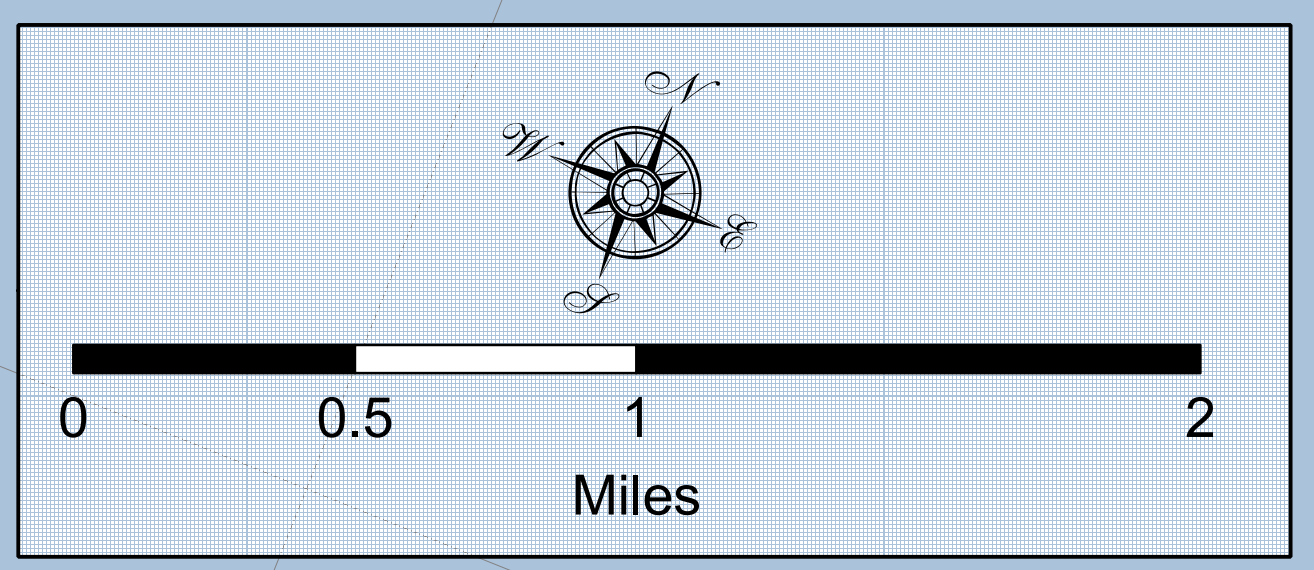
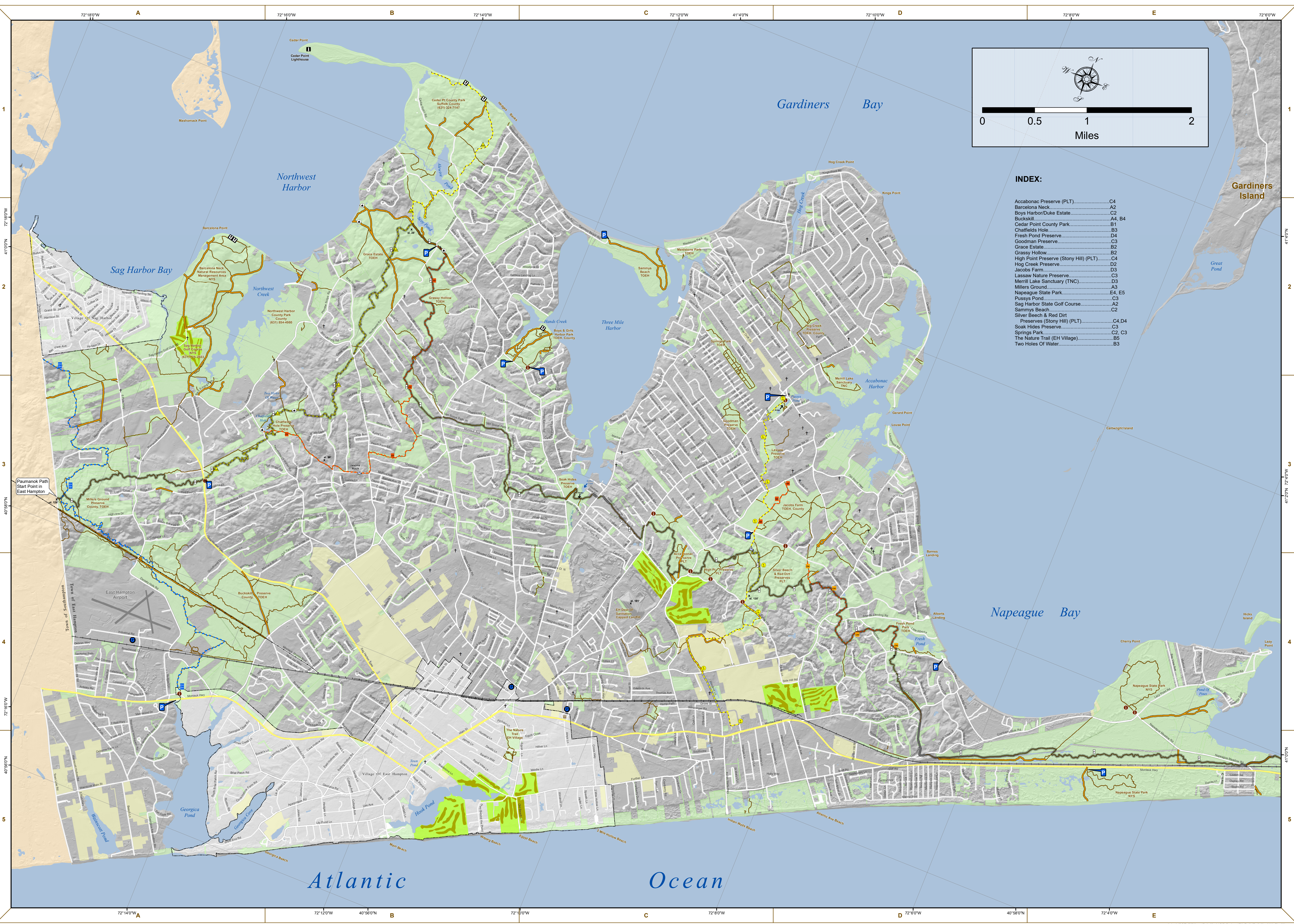
- Information Kiosk
- Parking For Trail Access
- Scenic View
- Historic Site
- Glacial Erratic
- Cemetery/Gravesite
- East Hampton Town Hall
- Police
- Hiking Trail
- Trail/Trail Access
- Paved Road/Old Paved Road
- Paumanok Path 45mi (EH Town Line to Montauk Pt.)
- East Hampton To Sag Harbor Trail 6.5mi
- Spring to Amagansett Trail 5mi
- Northwest Path 7.5mi
- Nancy Kane Trail 0.8mi
- George S Miller Trail 2.2mi
- Fosters Path 4.8mi

Roads and Infrastructure

- Main Highway
- Secondary Road
- Tertiary Road
- LIRR
- Powerline

Facilities and Landuse

- Airport
- Golf Course
- Golf Course Parcel
- Open Space
- Agricultural Land
- Villages



INDEX:

Accabonac Preserve (PLT)	C4
Barcelona Neck	A2
Boys Harbor/Duke Estate	C2
Buckskill	A4, B4
Cedar Point County Park	B1
Chatfields Hole	B3
Fresh Pond Preserve	D4
Goodman Preserve	C3
Grace Estate	B2
Grassy Hollow	B2
High Point Preserve (Stony Hill) (PLT)	C4
Hog Creek Preserve	D2
Jacobs Farm	D3
Lassaw Nature Preserve	C3
Merrill Lake Sanctuary (TNC)	D3
Millers Ground	A3
Napeague State Park	E4, E5
Pussys Pond	C3
Sag Harbor State Golf Course	A2
Sammys Beach	C2
Silver Beech & Red Dirt Preserves (Stony Hill) (PLT)	C4, D4
Soak Hides Preserve	C3
Spring Park	C2, C3
The Nature Trail (EH Village)	B5
Two Holes Of Water	B3